

# CARPET

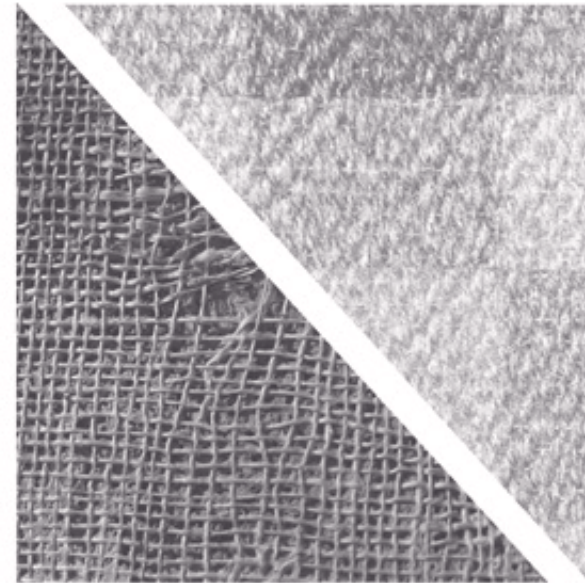
COLLECTION

A COLLECTION  
TO FEEL EVERY DETAIL



CROCHET MOKA RECT 60X60 / 24"X24"

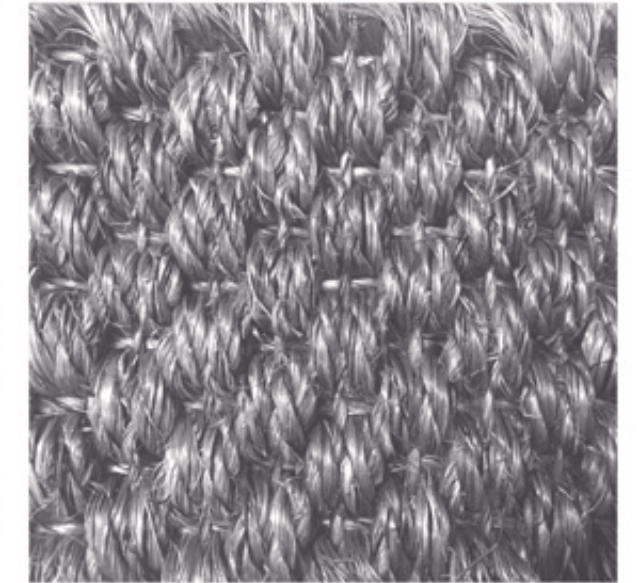
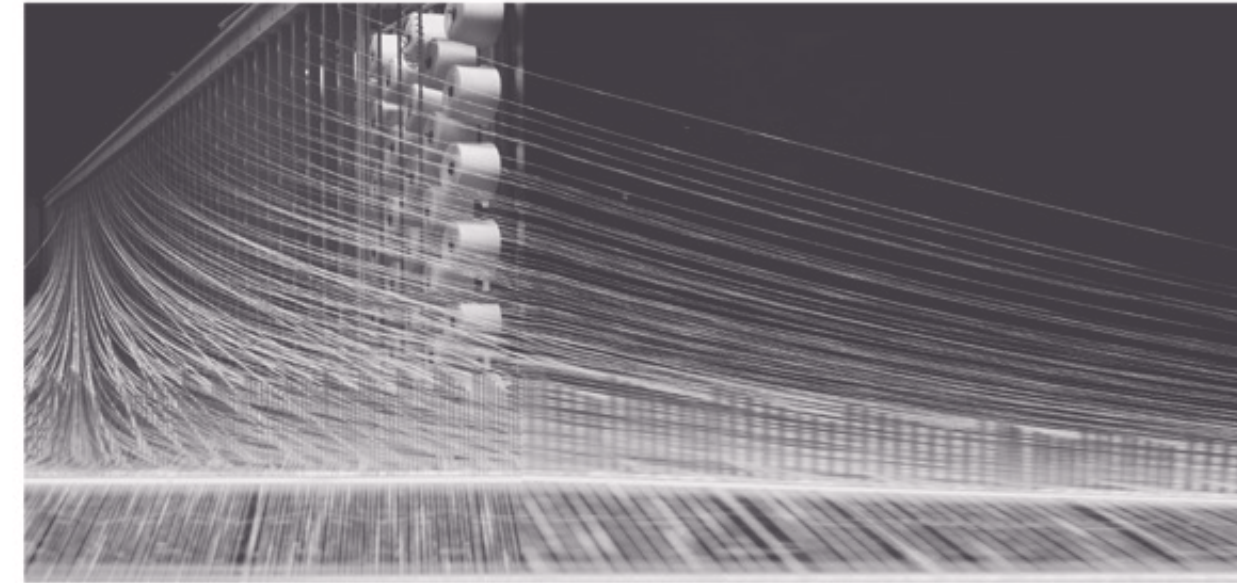
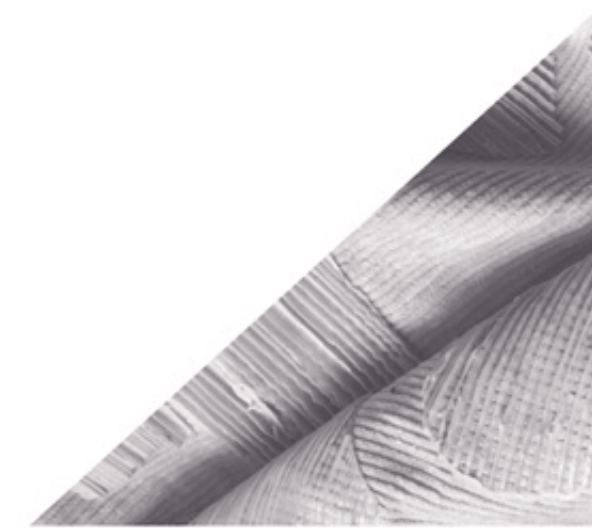




.....

C O N C E P T

.....



La colección Carpet de APE combina la magia de las texturas del hiperrealismo con la funcionalidad más sugerente. Diseñada para sentir la calidez de los tejidos naturales. Inspirada en la pureza y suavidad de la gama cromática que las protagonizan. Siente como la naturaleza se desliza en cada producto, fruto de la metamorfosis entre las fibras más primitivas y los diseños más avanzados.

*The Carpet collection from APE combines the magic of hyper-realism textures with the most stimulating functionality. Designed to feel the warmth of natural fabrics. Inspired in the purity and softness of the chromatic range they display. Feel how nature slips into each product, the fruit of a metamorphosis between the most primitive fibres and the most avant-garde designs.*





# CARPET SERIES

Atractivos diseños junto a una textura hiperrealista dan lugar a una superficie cálida y agradable al tacto. La sofisticación del acabado es la principal protagonista de esta sorprendente serie.

*Attractive designs together with a hyper-realist surface give rise to a warm and pleasant finish. The final touch is the leading protagonist of this surprising series.*

TRILOGY CLOUDY RECT 60X60 / 24"X24"





TRILOGY MOKA RECT. 60X60 / 24"X24"

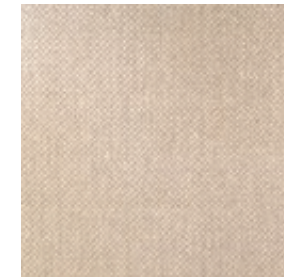
# CARPET

30X60 | 60X60 / 12"X24" | 24"X24"

P M   R10 V2  THICKNESS 0.39"



CARPET CREAM RECT.  
60 X 60 / 24" X 24" R47/M



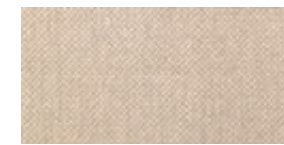
CARPET NATURAL RECT.  
60 X 60 / 24" X 24" R47/M



CARPET MOKA RECT.  
60 X 60 / 24" X 24" R47/M



CARPET CREAM RECT  
30 X 60 / 12" X 24" R47/M



CARPET NATURAL RECT  
30 X 60 / 12" X 24" R47/M



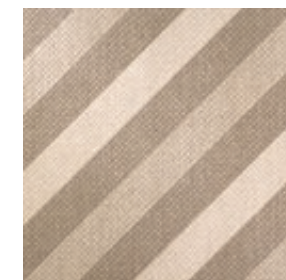
CARPET MOKA RECT  
30 X 60 / 12" X 24" R47/M



MOSAICO CARPET MIX HOT  
30 X 30 (3.5 X 3.5) / 12" X 12" K12/P



TRILOGY MOKA RECT.  
60 X 60 / 24" X 24" R23/M



CROCHET MOKA RECT.  
60 X 60 / 24" X 24" R23/M





CARPET SKY RECT 30X60 / 12"X24"  
CARPET CLOUDY RECT 30X60 / 12"X24"



CROCHET CLOUDY RECT 60X60 / 24"X24"



MOSAICO CARPET MIX COLD 30X30(3,5X3,5) / 12"X12"  
CARPET WATERFALL RECT 30X60 / 12"X24"  
CARPET WATERFALL RECT 60X60 / 24"X24"





CARPET CREAM RECT 60X60 / 24"X24"



CARPET CREAM RECT 30X60 / 12"X24"  
CARPET MOKA RECT 30X60 / 12"X24"



CROCHET CLOUDY RECT 60X60 / 24"X24"

CARPET  
COLLECTION  
INSPIRATION & COMBINATIONS



TRILOGY CLOUDY RECT 60X60 / 24"X24"



CARPET SKY RECT 30X60 / 12"X24"  
CARPET CLOUDY RECT 30X60 / 12"X24"

CROCHET MOKA RECT 60X60 / 24"X24"



# CARPET

30X60 | 60X60 / 12"X24" | 24"X24"

**P** **M**   **C2** **R10** **V2**  THICKNESS 0.39"



CARPET SKY RECT.  
60 X 60 / 24" X 24" **R47/M**



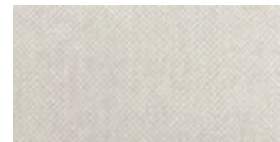
CARPET WATERFALL RECT.  
60 X 60 / 24" X 24" **R47/M**



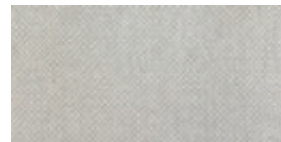
CARPET CLOUDY RECT.  
60 X 60 / 24" X 24" **R47/M**



CARPET GRAPHITE RECT.  
60 X 60 / 24" X 24" **R47/M**



CARPET SKY RECT  
30 X 60 / 12" X 24" **R47/M**



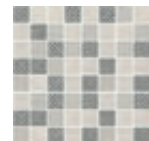
CARPET WATERFALL RECT  
30 X 60 / 12" X 24" **R47/M**



CARPET CLOUDY RECT  
30 X 60 / 12" X 24" **R47/M**



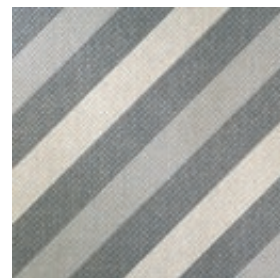
CARPET GRAPHITE RECT  
30 X 60 / 12" X 24" **R47/M**



MOSAICO CARPET MIX COLD  
30 X 30 (3.5 X 3.5) / 12" X 12" **K12/P**



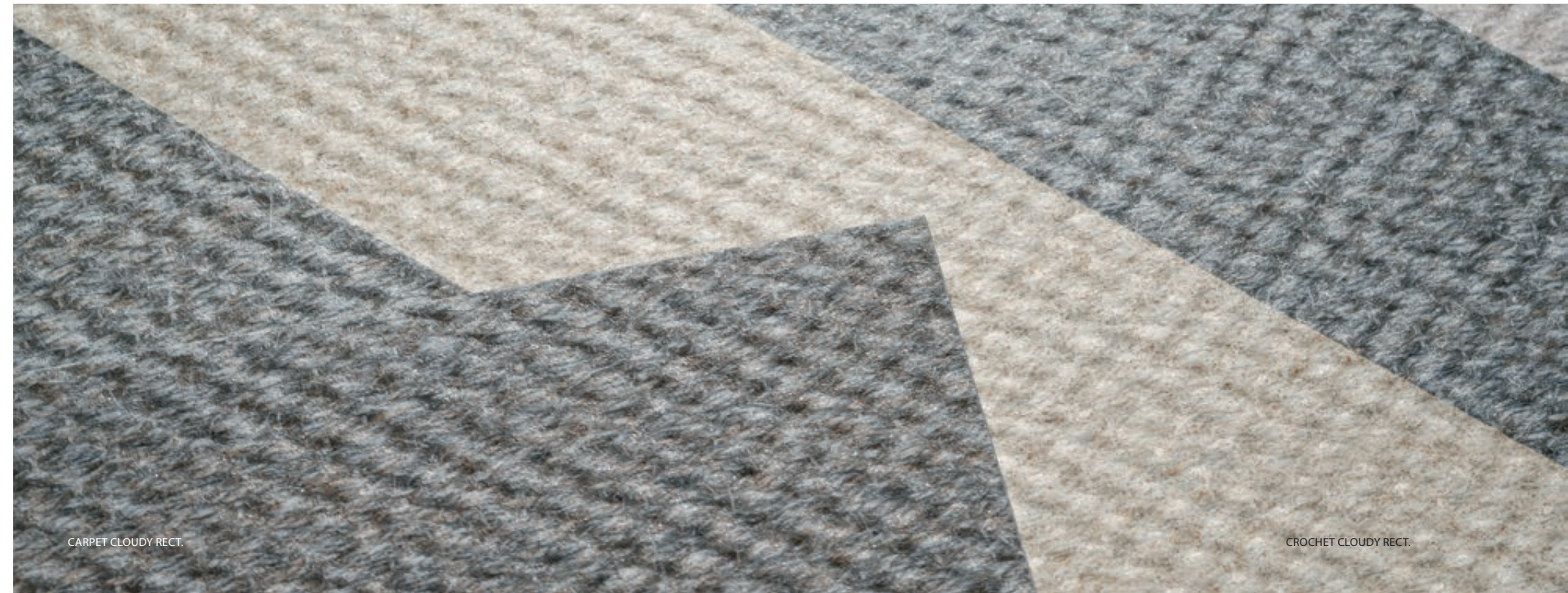
TRILOGY CLOUDY RECT.  
60 X 60 / 24" X 24" **R23/M**



CROCHET CLOUDY RECT.  
60 X 60 / 24" X 24" **R23/M**



CROCHET GRAPHITE RECT.  
60 X 60 / 24" X 24" **R23/M**



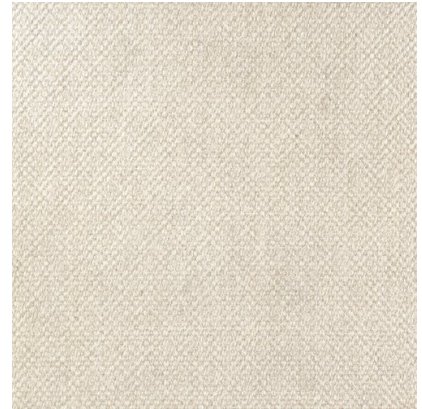
## CARACTERÍSTICAS TÉCNICAS · TECHNICAL CHARACTERISTICS · CARACTÉRISTIQUES TECHNIQUES · TECHNISCHE EIGENSCHAFTEN

- P** PORCELÁNICO / PORCELAIN TILES  
GRÈS CERÁME / FEINSTEINZEUG
- M** MATE / MATT  
MAT / MATT
-  **C2** CLASE 2 / CLASS 2  
CLASSE 2 / CLASSE 2
-  **R10**
-  **V2** VARIACION LEVE / SLIGHT VARIATION  
LÉGERE VARIATION / LEICHT FARBSPIEL
-  **T** ESPESOR / THICKNESS / ÉPAISSEUR / EMPFOHLENE FUGENBREITE:  
60X60 - 10mm / 0,39"

FORMATO SIZE FORMAT VERPACKUNG	PZS/CAJA TILES/BOX PIÈCES/BOITE STK/BOX	M <sup>2</sup> /CAJA SQM/BOX MÈTRES/BOITE M <sup>2</sup> /BOX	Kg/CAJA Kg/BOX Kg/BOITE Kg/BOX	CAJAS/PALLET BOXES/PALLET BOITES/PALLETTE BOX/PALLET	M <sup>2</sup> /PALLET SQM/PALLET MÈTRES/PALLETTE M <sup>2</sup> /PALLET	Kg/PALLET Kg/PALLET Kg/PALLETTE Kg/PALLET
60X60	4	1.44	33.5	32	46.08	1072
30X60	6	1.08	24.48	40	43.20	979



# CARPET CREAM RECT. 60X60



REFERENCE	SIZE (cm)	THICKNESS (mm)	GROUP
<b>A031630</b>	60X60	10,00	

## DIMENSIONS AND SURFACE PROPERTIES

Size, thickness, side straightness, flatness, orthogonality	UNE-EN 14411	It accomplished all requirements
---	--------------	----------------------------------

## PHYSICAL PROPERTIES

Water absorption capacity	EN ISO 10545-03	< 0,5%
Flexion resistance	EN ISO 10545-04	=> 45 N/mm <sup>2</sup>
Abrasion resistance (glazed Ceramic)	EN ISO10545-07	IV
Thermal shock resistance	EN ISO 10545-09	It stands the test
Cracking resistance	EN ISO 10545-11	It stands the test
Frost resistance	EN ISO 10545-12	It stands the test

## CHEMICAL PROPERTIES

Resistance to acids	EN ISO 10545-13	GLA
Resistance to alcalis	EN ISO 10545-13	GLA
Resistance to cleaning products	EN ISO 10545-13	GA
Resistance to chemical products in swimming pool water	EN ISO 10545-13	GA
Stains resistance	EN ISO 10545-14	5

## ANTI-SLIP CHARACTERISTICS

Slip resistance (Rd)	UNE-ENV12633	Class 2
Slip resistance (R)	DIN 51130	R10
Slip resistance (barefeet)	DIN 51097	B
Slip resistance (DCOF)	ANSI A137,1	0,54



# CARPET NATURAL RECT. 60X60



REFERENCE	SIZE (cm)	THICKNESS (mm)	GROUP
<b>A031629</b>	60X60	10,00	

## DIMENSIONS AND SURFACE PROPERTIES

Size, thickness, side straightness, flatness, orthogonality	UNE-EN 14411	It accomplished all requeriments
---	--------------	----------------------------------

## PHYSICAL PROPERTIES

Water absorption capacity	EN ISO 10545-03	< 0,5%
Flexion resistance	EN ISO 10545-04	=> 45 N/mm <sup>2</sup>
Abrasion resistance (glazed Ceramic)	EN ISO10545-07	IV
Thermal shock resistance	EN ISO 10545-09	It stands the test
Cracking resistance	EN ISO 10545-11	It stands the test
Frost resistance	EN ISO 10545-12	It stands the test

## CHEMICAL PROPERTIES

Resistance to acids	EN ISO 10545-13	GLA
Resistance to alcalis	EN ISO 10545-13	GLA
Resistance to cleaning products	EN ISO 10545-13	GA
Resistance to chemical products in swimming pool water	EN ISO 10545-13	GA
Stains resistance	EN ISO 10545-14	5

## ANTI-SLIP CHARACTERISTICS

Slip resistance (Rd)	UNE-ENV12633	Class 2
Slip resistance (R)	DIN 51130	R10
Slip resistance (barefeet)	DIN 51097	B
Slip resistance (DCOF)	ANSI A137,1	0,54



## CARPET MOKA RECT. 60X60

REFERENCE	SIZE (cm)	THICKNESS (mm)	GROUP
<b>A031628</b>	60X60	10,00	



### DIMENSIONS AND SURFACE PROPERTIES

Size, thickness, side straightness, flatness, orthogonality	UNE-EN 14411	It accomplished all requirements
---	--------------	----------------------------------

### PHYSICAL PROPERTIES

Water absorption capacity	EN ISO 10545-03	< 0,5%
Flexion resistance	EN ISO 10545-04	=> 45 N/mm <sup>2</sup>
Abrasion resistance (glazed Ceramic)	EN ISO10545-07	IV
Thermal shock resistance	EN ISO 10545-09	It stands the test
Cracking resistance	EN ISO 10545-11	It stands the test
Frost resistance	EN ISO 10545-12	It stands the test

### CHEMICAL PROPERTIES

Resistance to acids	EN ISO 10545-13	GLA
Resistance to alkalis	EN ISO 10545-13	GLA
Resistance to cleaning products	EN ISO 10545-13	GA
Resistance to chemical products in swimming pool water	EN ISO 10545-13	GA
Stains resistance	EN ISO 10545-14	5

### ANTI-SLIP CHARACTERISTICS

Slip resistance (Rd)	UNE-ENV12633	Class 2
Slip resistance (R)	DIN 51130	R10
Slip resistance (barefeet)	DIN 51097	B
Slip resistance (DCOF)	ANSI A137,1	0,54



# TRILOGY MOKA RECT. 60X60



REFERENCE	SIZE (cm)	THICKNESS (mm)	GROUP
<b>A031677</b>	60X60	10,00	

## DIMENSIONS AND SURFACE PROPERTIES

Size, thickness, side straightness, flatness, orthogonality	UNE-EN 14411	It accomplished all requeriments
---	--------------	----------------------------------

## PHYSICAL PROPERTIES

Water absorption capacity	EN ISO 10545-03	< 0,5%
Flexion resistance	EN ISO 10545-04	=> 45 N/mm <sup>2</sup>
Abrasion resistance (glazed Ceramic)	EN ISO10545-07	IV
Thermal shock resistance	EN ISO 10545-09	It stands the test
Cracking resistance	EN ISO 10545-11	It stands the test
Frost resistance	EN ISO 10545-12	It stands the test

## CHEMICAL PROPERTIES

Resistance to acids	EN ISO 10545-13	GLA
Resistance to alcalis	EN ISO 10545-13	GLA
Resistance to cleaning products	EN ISO 10545-13	GA
Resistance to chemical products in swimming pool water	EN ISO 10545-13	GA
Stains resistance	EN ISO 10545-14	5

## ANTI-SLIP CHARACTERISTICS

Slip resistance (Rd)	UNE-ENV12633	Class 2
Slip resistance (R)	DIN 51130	R10
Slip resistance (DCOF)	ANSI A137,1	0,54



## CROCHET MOKA RECT. 60X60



REFERENCE	SIZE (cm)	THICKNESS (mm)	GROUP
<b>A031675</b>	60X60	10,00	

### DIMENSIONS AND SURFACE PROPERTIES

Size, thickness, side straightness, flatness, orthogonality	UNE-EN 14411	It accomplished all requirements
---	--------------	----------------------------------

### PHYSICAL PROPERTIES

Water absorption capacity	EN ISO 10545-03	< 0,5%
Flexion resistance	EN ISO 10545-04	=> 45 N/mm <sup>2</sup>
Abrasion resistance (glazed Ceramic)	EN ISO10545-07	IV
Thermal shock resistance	EN ISO 10545-09	It stands the test
Cracking resistance	EN ISO 10545-11	It stands the test
Frost resistance	EN ISO 10545-12	It stands the test

### CHEMICAL PROPERTIES

Resistance to acids	EN ISO 10545-13	GLA
Resistance to alcalis	EN ISO 10545-13	GLA
Resistance to cleaning products	EN ISO 10545-13	GA
Resistance to chemical products in swimming pool water	EN ISO 10545-13	GA
Stains resistance	EN ISO 10545-14	5

### ANTI-SLIP CHARACTERISTICS

Slip resistance (Rd)	UNE-ENV12633	Class 2
Slip resistance (R)	DIN 51130	R10
Slip resistance (DCOF)	ANSI A137,1	0,54



## ROD. CARPET CREAM 7,5X60

REFERENCE	SIZE (cm)	THICKNESS (mm)	GROUP
<b>A036626</b>	7,5x60	0,00	



### DIMENSIONS AND SURFACE PROPERTIES

Size, thickness, side straightness, flatness, orthogonality	UNE-EN 14411	It accomplished all requirements
---	--------------	----------------------------------

### PHYSICAL PROPERTIES

Water absorption capacity	EN ISO 10545-03	< 0,5%
Flexion resistance	EN ISO 10545-04	=> 45 N/mm <sup>2</sup>
Thermal shock resistance	EN ISO 10545-09	It stands the test
Cracking resistance	EN ISO 10545-11	It stands the test
Frost resistance	EN ISO 10545-12	It stands the test

### CHEMICAL PROPERTIES

Resistance to acids	EN ISO 10545-13	GLA
Resistance to alcalis	EN ISO 10545-13	GLA
Resistance to cleaning products	EN ISO 10545-13	GA
Resistance to chemical products in swimming pool water	EN ISO 10545-13	GA
Stains resistance	EN ISO 10545-14	5



## ROD. CARPET NATURAL 7,5X60

REFERENCE	SIZE (cm)	THICKNESS (mm)	GROUP
<b>A034592</b>	7,5x60	0,00	



### DIMENSIONS AND SURFACE PROPERTIES

Size, thickness, side straightness, flatness, orthogonality	UNE-EN 14411	It accomplished all requirements
---	--------------	----------------------------------

### PHYSICAL PROPERTIES

Water absorption capacity	EN ISO 10545-03	< 0,5%
Flexion resistance	EN ISO 10545-04	=> 45 N/mm <sup>2</sup>
Thermal shock resistance	EN ISO 10545-09	It stands the test
Cracking resistance	EN ISO 10545-11	It stands the test
Frost resistance	EN ISO 10545-12	It stands the test

### CHEMICAL PROPERTIES

Resistance to acids	EN ISO 10545-13	GLA
Resistance to alcalis	EN ISO 10545-13	GLA
Resistance to cleaning products	EN ISO 10545-13	GA
Resistance to chemical products in swimming pool water	EN ISO 10545-13	GA
Stains resistance	EN ISO 10545-14	5



## ROD. CARPET MOKA 7,5X60

REFERENCE	SIZE (cm)	THICKNESS (mm)	GROUP
<b>A035496</b>	7,5x60	0,00	



### DIMENSIONS AND SURFACE PROPERTIES

Size, thickness, side straightness, flatness, orthogonality	UNE-EN 14411	It accomplished all requeriments
---	--------------	----------------------------------

### PHYSICAL PROPERTIES

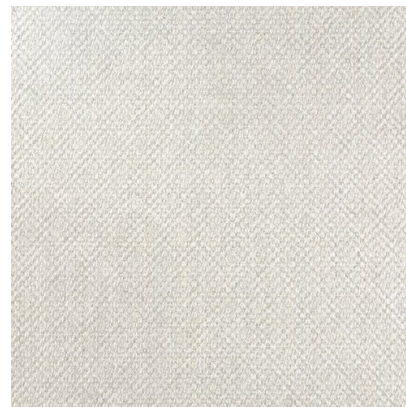
Water absorption capacity	EN ISO 10545-03	< 0,5%
Flexion resistance	EN ISO 10545-04	=> 45 N/mm <sup>2</sup>
Thermal shock resistance	EN ISO 10545-09	It stands the test
Cracking resistance	EN ISO 10545-11	It stands the test
Frost resistance	EN ISO 10545-12	It stands the test

### CHEMICAL PROPERTIES

Resistance to acids	EN ISO 10545-13	GLA
Resistance to alcalis	EN ISO 10545-13	GLA
Resistance to cleaning products	EN ISO 10545-13	GA
Resistance to chemical products in swimming pool water	EN ISO 10545-13	GA
Stains resistance	EN ISO 10545-14	5



# CARPET SKY RECT. 60X60



REFERENCE	SIZE (cm)	THICKNESS (mm)	GROUP
<b>A031633</b>	60X60	10,00	

## DIMENSIONS AND SURFACE PROPERTIES

Size, thickness, side straightness, flatness, orthogonality	UNE-EN 14411	It accomplished all requirements
---	--------------	----------------------------------

## PHYSICAL PROPERTIES

Water absorption capacity	EN ISO 10545-03	< 0,5%
Flexion resistance	EN ISO 10545-04	=> 45 N/mm <sup>2</sup>
Abrasion resistance (glazed Ceramic)	EN ISO10545-07	IV
Thermal shock resistance	EN ISO 10545-09	It stands the test
Cracking resistance	EN ISO 10545-11	It stands the test
Frost resistance	EN ISO 10545-12	It stands the test

## CHEMICAL PROPERTIES

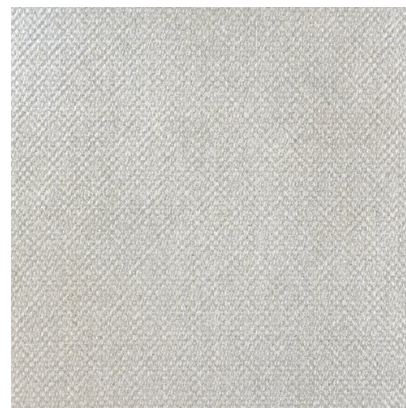
Resistance to acids	EN ISO 10545-13	GLA
Resistance to alcalis	EN ISO 10545-13	GLA
Resistance to cleaning products	EN ISO 10545-13	GA
Resistance to chemical products in swimming pool water	EN ISO 10545-13	GA
Stains resistance	EN ISO 10545-14	5

## ANTI-SLIP CHARACTERISTICS

Slip resistance (Rd)	UNE-ENV12633	Class 2
Slip resistance (R)	DIN 51130	R10
Slip resistance (barefeet)	DIN 51097	B
Slip resistance (DCOF)	ANSI A137,1	0,54



# CARPET WATERFALL RECT. 60X60



REFERENCE	SIZE (cm)	THICKNESS (mm)	GROUP
<b>A031632</b>	60X60	10,00	

## DIMENSIONS AND SURFACE PROPERTIES

Size, thickness, side straightness, flatness, orthogonality	UNE-EN 14411	It accomplished all requirements
---	--------------	----------------------------------

## PHYSICAL PROPERTIES

Water absorption capacity	EN ISO 10545-03	< 0,5%
Flexion resistance	EN ISO 10545-04	=> 45 N/mm <sup>2</sup>
Abrasion resistance (glazed Ceramic)	EN ISO10545-07	IV
Thermal shock resistance	EN ISO 10545-09	It stands the test
Cracking resistance	EN ISO 10545-11	It stands the test
Frost resistance	EN ISO 10545-12	It stands the test

## CHEMICAL PROPERTIES

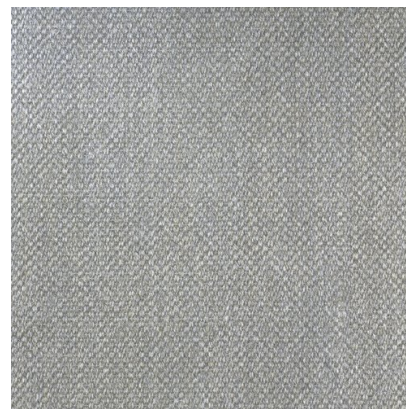
Resistance to acids	EN ISO 10545-13	GLA
Resistance to alcalis	EN ISO 10545-13	GLA
Resistance to cleaning products	EN ISO 10545-13	GA
Resistance to chemical products in swimming pool water	EN ISO 10545-13	GA
Stains resistance	EN ISO 10545-14	5

## ANTI-SLIP CHARACTERISTICS

Slip resistance (Rd)	UNE-ENV12633	Class 2
Slip resistance (R)	DIN 51130	R10
Slip resistance (barefeet)	DIN 51097	B
Slip resistance (DCOF)	ANSI A137,1	0,54



# CARPET CLOUDY RECT. 60X60



REFERENCE	SIZE (cm)	THICKNESS (mm)	GROUP
<b>A031631</b>	60X60	10,00	

## DIMENSIONS AND SURFACE PROPERTIES

Size, thickness, side straightness, flatness, orthogonality	UNE-EN 14411	It accomplished all requirements
---	--------------	----------------------------------

## PHYSICAL PROPERTIES

Water absorption capacity	EN ISO 10545-03	< 0,5%
Flexion resistance	EN ISO 10545-04	=> 45 N/mm <sup>2</sup>
Abrasion resistance (glazed Ceramic)	EN ISO10545-07	IV
Thermal shock resistance	EN ISO 10545-09	It stands the test
Cracking resistance	EN ISO 10545-11	It stands the test
Frost resistance	EN ISO 10545-12	It stands the test

## CHEMICAL PROPERTIES

Resistance to acids	EN ISO 10545-13	GLA
Resistance to alcalis	EN ISO 10545-13	GLA
Resistance to cleaning products	EN ISO 10545-13	GA
Resistance to chemical products in swimming pool water	EN ISO 10545-13	GA
Stains resistance	EN ISO 10545-14	5

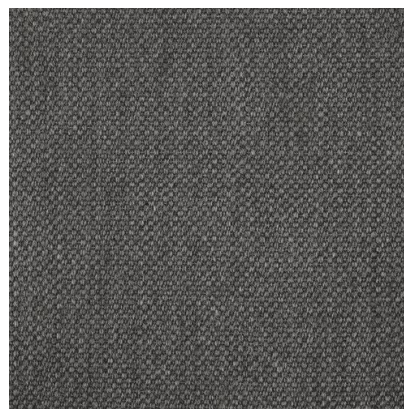
## ANTI-SLIP CHARACTERISTICS

Slip resistance (Rd)	UNE-ENV12633	Class 2
Slip resistance (R)	DIN 51130	R10
Slip resistance (barefeet)	DIN 51097	B
Slip resistance (DCOF)	ANSI A137,1	0,54



# CARPET GRAPHITE RECT. 60X60

REFERENCE	SIZE (cm)	THICKNESS (mm)	GROUP
<b>A031973</b>	60X60	10,00	



## DIMENSIONS AND SURFACE PROPERTIES

Size, thickness, side straightness, flatness, orthogonality	UNE-EN 14411	It accomplished all requirements
---	--------------	----------------------------------

## PHYSICAL PROPERTIES

Water absorption capacity	EN ISO 10545-03	< 0,5%
Flexion resistance	EN ISO 10545-04	=> 45 N/mm <sup>2</sup>
Abrasion resistance (glazed Ceramic)	EN ISO 10545-07	IV
Thermal shock resistance	EN ISO 10545-09	It stands the test
Cracking resistance	EN ISO 10545-11	It stands the test
Frost resistance	EN ISO 10545-12	It stands the test

## CHEMICAL PROPERTIES

Resistance to acids	EN ISO 10545-13	GLA
Resistance to alcalis	EN ISO 10545-13	GLA
Resistance to cleaning products	EN ISO 10545-13	GA
Resistance to chemical products in swimming pool water	EN ISO 10545-13	GA
Stains resistance	EN ISO 10545-14	5

## ANTI-SLIP CHARACTERISTICS

Slip resistance (Rd)	UNE-ENV12633	Class 2
Slip resistance (R)	DIN 51130	R10
Slip resistance (DCOF)	ANSI A137,1	0,54



## TRILOGY CLOUDY RECT. 60X60

REFERENCE	SIZE (cm)	THICKNESS (mm)	GROUP
<b>A031678</b>	60X60	10,00	



### DIMENSIONS AND SURFACE PROPERTIES

Size, thickness, side straightness, flatness, orthogonality	UNE-EN 14411	It accomplished all requirements
---	--------------	----------------------------------

### PHYSICAL PROPERTIES

Water absorption capacity	EN ISO 10545-03	< 0,5%
Flexion resistance	EN ISO 10545-04	=> 45 N/mm <sup>2</sup>
Abrasion resistance (glazed Ceramic)	EN ISO10545-07	IV
Thermal shock resistance	EN ISO 10545-09	It stands the test
Cracking resistance	EN ISO 10545-11	It stands the test
Frost resistance	EN ISO 10545-12	It stands the test

### CHEMICAL PROPERTIES

Resistance to acids	EN ISO 10545-13	GLA
Resistance to alcalis	EN ISO 10545-13	GLA
Resistance to cleaning products	EN ISO 10545-13	GA
Resistance to chemical products in swimming pool water	EN ISO 10545-13	GA
Stains resistance	EN ISO 10545-14	5

### ANTI-SLIP CHARACTERISTICS

Slip resistance (Rd)	UNE-ENV12633	Class 2
Slip resistance (R)	DIN 51130	R10
Slip resistance (DCOF)	ANSI A137,1	0,54



## CROCHET CLOUDY RECT. 60X60

REFERENCE	SIZE (cm)	THICKNESS (mm)	GROUP
<b>A031676</b>	60X60	10,00	



### DIMENSIONS AND SURFACE PROPERTIES

Size, thickness, side straightness, flatness, orthogonality	UNE-EN 14411	It accomplished all requeriments
---	--------------	----------------------------------

### PHYSICAL PROPERTIES

Water absorption capacity	EN ISO 10545-03	< 0,5%
Flexion resistance	EN ISO 10545-04	=> 45 N/mm <sup>2</sup>
Abrasion resistance (glazed Ceramic)	EN ISO10545-07	IV
Thermal shock resistance	EN ISO 10545-09	It stands the test
Cracking resistance	EN ISO 10545-11	It stands the test
Frost resistance	EN ISO 10545-12	It stands the test

### CHEMICAL PROPERTIES

Resistance to acids	EN ISO 10545-13	GLA
Resistance to alcalis	EN ISO 10545-13	GLA
Resistance to cleaning products	EN ISO 10545-13	GA
Resistance to chemical products in swimming pool water	EN ISO 10545-13	GA
Stains resistance	EN ISO 10545-14	5

### ANTI-SLIP CHARACTERISTICS

Slip resistance (Rd)	UNE-ENV12633	Class 2
Slip resistance (R)	DIN 51130	R10
Slip resistance (DCOF)	ANSI A137,1	0,54



# CROCHET GRAPHITE RECT. 60X60

REFERENCE	SIZE (cm)	THICKNESS (mm)	GROUP
<b>A031974</b>	60X60	10,00	



## DIMENSIONS AND SURFACE PROPERTIES

Size, thickness, side straightness, flatness, orthogonality	UNE-EN 14411	It accomplished all requirements
---	--------------	----------------------------------

## PHYSICAL PROPERTIES

Water absorption capacity	EN ISO 10545-03	< 0,5%
Flexion resistance	EN ISO 10545-04	=> 45 N/mm <sup>2</sup>
Abrasion resistance (glazed Ceramic)	EN ISO 10545-07	IV
Thermal shock resistance	EN ISO 10545-09	It stands the test
Cracking resistance	EN ISO 10545-11	It stands the test
Frost resistance	EN ISO 10545-12	It stands the test

## CHEMICAL PROPERTIES

Resistance to acids	EN ISO 10545-13	GLA
Resistance to alcalis	EN ISO 10545-13	GLA
Resistance to cleaning products	EN ISO 10545-13	GA
Resistance to chemical products in swimming pool water	EN ISO 10545-13	GA
Stains resistance	EN ISO 10545-14	5

## ANTI-SLIP CHARACTERISTICS

Slip resistance (Rd)	UNE-ENV12633	Class 2
Slip resistance (R)	DIN 51130	R10
Slip resistance (DCOF)	ANSI A137,1	0,54



## ROD. CARPET SKY 7,5X60

REFERENCE	SIZE (cm)	THICKNESS (mm)	GROUP
<b>A038416</b>	7,5x60	0,00	



### DIMENSIONS AND SURFACE PROPERTIES

Size, thickness, side straightness, flatness, orthogonality	UNE-EN 14411	It accomplished all requirements
---	--------------	----------------------------------

### PHYSICAL PROPERTIES

Water absorption capacity	EN ISO 10545-03	< 0,5%
Flexion resistance	EN ISO 10545-04	=> 45 N/mm <sup>2</sup>
Thermal shock resistance	EN ISO 10545-09	It stands the test
Cracking resistance	EN ISO 10545-11	It stands the test
Frost resistance	EN ISO 10545-12	It stands the test

### CHEMICAL PROPERTIES

Resistance to acids	EN ISO 10545-13	GLA
Resistance to alcalis	EN ISO 10545-13	GLA
Resistance to cleaning products	EN ISO 10545-13	GA
Resistance to chemical products in swimming pool water	EN ISO 10545-13	GA
Stains resistance	EN ISO 10545-14	5



## ROD. CARPET WATERFALL 7,5X60

REFERENCE	SIZE (cm)	THICKNESS (mm)	GROUP
<b>A034923</b>	7,5x60	10,00	



### DIMENSIONS AND SURFACE PROPERTIES

Size, thickness, side straightness, flatness, orthogonality	UNE-EN 14411	It accomplished all requirements
---	--------------	----------------------------------

### PHYSICAL PROPERTIES

Water absorption capacity	EN ISO 10545-03	< 0,5%
Flexion resistance	EN ISO 10545-04	=> 45 N/mm <sup>2</sup>
Thermal shock resistance	EN ISO 10545-09	It stands the test
Cracking resistance	EN ISO 10545-11	It stands the test
Frost resistance	EN ISO 10545-12	It stands the test

### CHEMICAL PROPERTIES

Resistance to acids	EN ISO 10545-13	GLA
Resistance to alcalis	EN ISO 10545-13	GLA
Resistance to cleaning products	EN ISO 10545-13	GA
Resistance to chemical products in swimming pool water	EN ISO 10545-13	GA
Stains resistance	EN ISO 10545-14	5



## ROD. CARPET CLOUDY 7,5X60

REFERENCE	SIZE (cm)	THICKNESS (mm)	GROUP
<b>A034922</b>	7,5x60	10,00	



### DIMENSIONS AND SURFACE PROPERTIES

Size, thickness, side straightness, flatness, orthogonality      UNE-EN 14411      It accomplished all requirements

### PHYSICAL PROPERTIES

Water absorption capacity	EN ISO 10545-03	< 0,5%
Flexion resistance	EN ISO 10545-04	=> 45 N/mm <sup>2</sup>
Thermal shock resistance	EN ISO 10545-09	It stands the test
Cracking resistance	EN ISO 10545-11	It stands the test
Frost resistance	EN ISO 10545-12	It stands the test

### CHEMICAL PROPERTIES

Resistance to acids	EN ISO 10545-13	GLA
Resistance to alcalis	EN ISO 10545-13	GLA
Resistance to cleaning products	EN ISO 10545-13	GA
Resistance to chemical products in swimming pool water	EN ISO 10545-13	GA
Stains resistance	EN ISO 10545-14	5



## ROD. CARPET GRAPHITE 7,5X60

REFERENCE	SIZE (cm)	THICKNESS (mm)	GROUP
<b>A034289</b>	7,5x60	10,00	



### DIMENSIONS AND SURFACE PROPERTIES

Size, thickness, side straightness, flatness, orthogonality	UNE-EN 14411	It accomplished all requeriments
---	--------------	----------------------------------

### PHYSICAL PROPERTIES

Water absorption capacity	EN ISO 10545-03	< 0,5%
Flexion resistance	EN ISO 10545-04	=> 45 N/mm <sup>2</sup>
Thermal shock resistance	EN ISO 10545-09	It stands the test
Cracking resistance	EN ISO 10545-11	It stands the test
Frost resistance	EN ISO 10545-12	It stands the test

### CHEMICAL PROPERTIES

Resistance to acids	EN ISO 10545-13	GLA
Resistance to alcalis	EN ISO 10545-13	GLA
Resistance to cleaning products	EN ISO 10545-13	GA
Resistance to chemical products in swimming pool water	EN ISO 10545-13	GA
Stains resistance	EN ISO 10545-14	5





A COLLECTION  
TO FEEL EVERY  
DETAIL