

# HABITAT



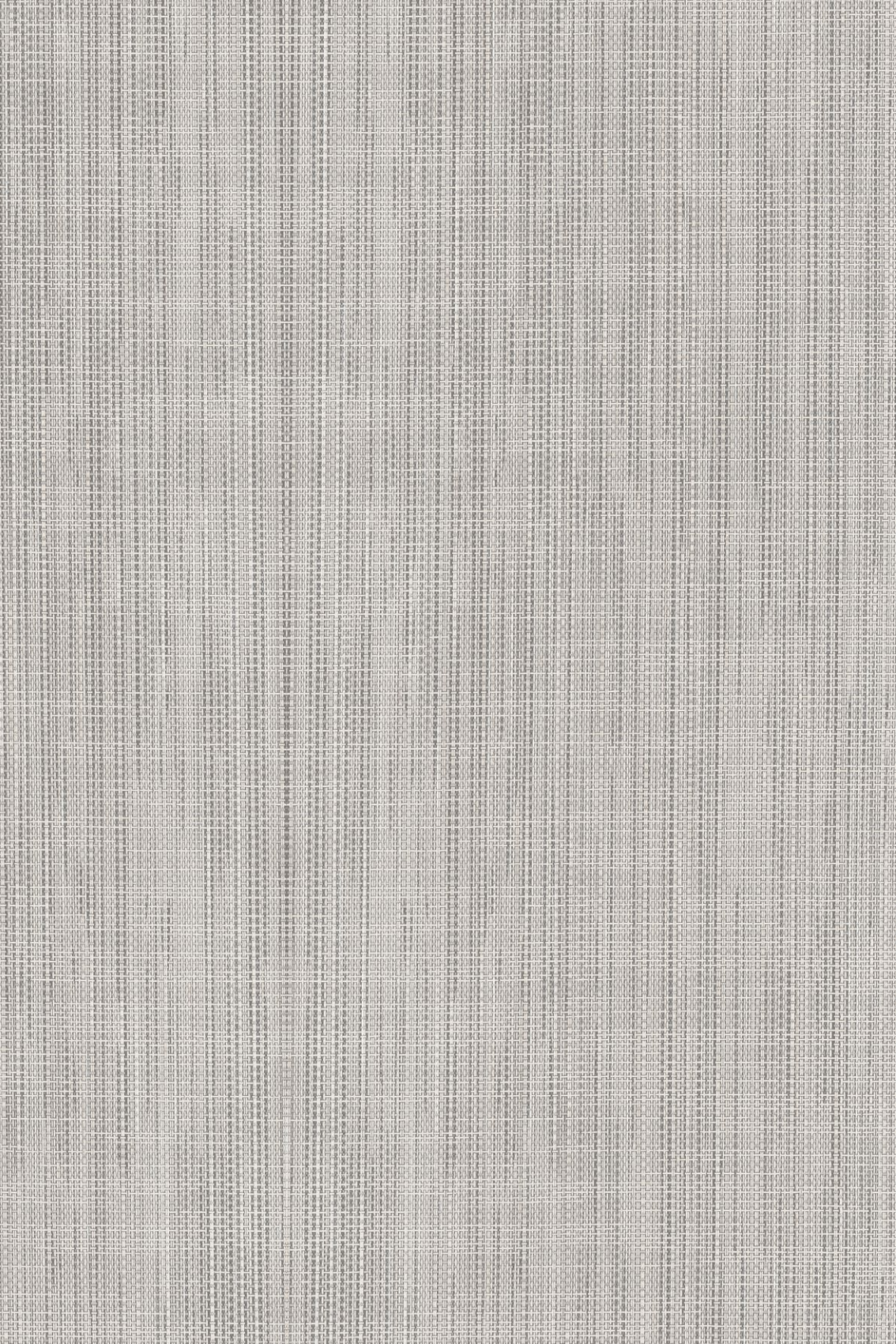
## — Habitat

Arriving home in winter after a day at work, lighting a fire, slipping into comfortable clothes and enjoying a peaceful moment is simply priceless. Nothing compares to the warmth of your home.

This scene gave rise to a fabric-inspired collection, which replicates a marbled canvas full of colour hues in its threads.

Llegar a casa después de un día de trabajo en invierno, encender la chimenea, ponerse ropa cómoda y disfrutar de un momento de relax no tiene precio. Nada es comparable con la calidez del hogar.

A partir de esta escena surge una colección inspirada en los tejidos, que reproduce una tela jaspeada repleta de matices de color en sus hilos.



**Habitat is a tile for experiencing, for walking barefoot on, for feeling its delicate texture and for admiring the infinite nuances within its pieces; threads that become language through movement.**

**And a broad colour range that allows for endless combinations: white, sky, grey, blue and cappuccino.**

**Habitat es una cerámica para vivirla, para pasear descalzo, sentir su delicada textura y observar sus infinitos matices dentro de sus piezas, hilos que a través de su movimiento se convierten en lenguaje.**

**Amplia gama cromática que nos permite un sinfín de combinaciones: white, sky, grey, blue y capuccino.**

# Habitat

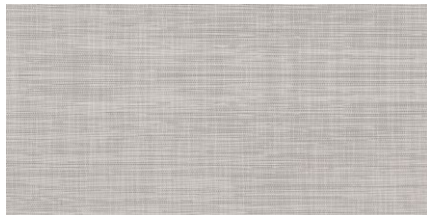
60X120-30X60 24"X48"-12"X24



HABITAT WHITE RECT  
60X120 / 24"X48" N10/M



HABITAT WHITE  
30X60 / 12"X24" N92/M



HABITAT SKY RECT  
60X120 / 24"X48" N10/M



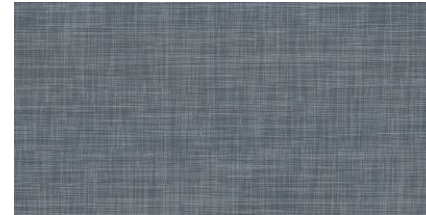
HABITAT SKY  
30X60 / 12"X24" N92/M



HABITAT GREY RECT  
60X120 / 24"X48" N10/M



HABITAT GREY  
30X60 / 12"X24" N92/M



HABITAT BLUE RECT  
60X120 / 24"X48" N10/M



HABITAT BLUE  
30X60 / 12"X24" N92/M



HABITAT CAPPUCCINO RECT  
60X120 / 24"X48" N10/M



HABITAT CAPPUCCINO  
30X60 / 12"X24" N92/M



POCKET BLUE  
30X60 / 12"X24" N81/M



POCKET CAPPUCCINO  
30X60 / 12"X24" N81/M

## VARIACIÓN DE DISEÑO · GRAPHIC FACES



60X120 - 3 PIEZAS/3 PIECES

30X60 - 9 PIEZAS/9 PIECES

## CARACTERÍSTICAS TÉCNICAS · TECHNICAL CHARACTERISTICS



PORCELÁNICO/PORCELAIN TILES



(DCOF) >0.42



MATE/MATT



VARIACION LEVE/SLIGHT VARIATION



RECTIFICADO/RECTIFIED



ESPESOR/THICKNESS  
60X120 - 11,3MM/0,45"  
30X60 - 10MM/0,4"

FORMATO PZAS PIECES FORMAT	PZS/CAJA TILES/BOX	M2/CAJA SQM/BOX	KG/CAJA KG/BOX	CAJAS/PALLET BOXES/PALLET	M2/PALLET SQM/PALLET	KG/PALLET KG/PALLET
60X120	2	1,44	37,33	27	38,88	1.028
30X60	6	1,08	25,64	40	43,20	1.046

HABITAT WHITE 30X60 / POCKET CAPUCHINO 30X60 / WORK B CENERE RECT. 60X60



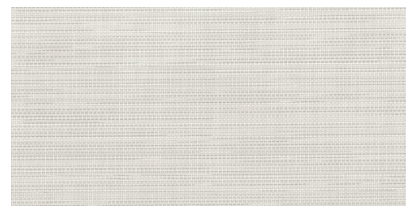
HABITAT CAPPUCCINO RECT. 60X120



HABITAT GREY RECT. 60X120

# HABITAT WHITE RECT 30X60

REFERENCE	SIZE (cm)	THICKNESS (mm)	GROUP
<b>A037151</b>	30X60	10,00	



## DIMENSIONS AND SURFACE PROPERTIES

Size, thickness, side straightness, flatness, orthogonality UNE-EN 14411 It accomplished all requirements

## PHYSICAL PROPERTIES

Water absorption capacity	EN ISO 10545-03	< 0,5%
Flexion resistance	EN ISO 10545-04	=> 45 N/mm <sup>2</sup>
Abrasion resistance (glazed Ceramic)	EN ISO 10545-07	IV
Thermal shock resistance	EN ISO 10545-09	It stands the test
Cracking resistance	EN ISO 10545-11	It stands the test
Frost resistance	EN ISO 10545-12	It stands the test

## CHEMICAL PROPERTIES

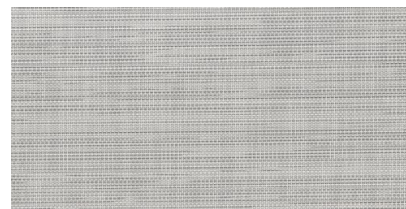
Resistance to acids	EN ISO 10545-13	GLA
Resistance to alcalis	EN ISO 10545-13	GLA
Resistance to cleaning products	EN ISO 10545-13	GA
Resistance to chemical products in swimming pool water	EN ISO 10545-13	GA
Stains resistance	EN ISO 10545-14	5

## ANTI-SLIP CHARACTERISTICS

Slip resistance (Rd)	UNE-ENV12633	Class 1
Slip resistance (R)	DIN 51130	R10
Slip resistance (DCOF)	ANSI A137,1	0.42

# HABITAT SKY RECT 30X60

REFERENCE	SIZE (cm)	THICKNESS (mm)	GROUP
<b>A037153</b>	30X60	10,00	



## DIMENSIONS AND SURFACE PROPERTIES

Size, thickness, side straightness, flatness, orthogonality UNE-EN 14411 It accomplished all requirements

## PHYSICAL PROPERTIES

Water absorption capacity	EN ISO 10545-03	< 0,5%
Flexion resistance	EN ISO 10545-04	=> 45 N/mm <sup>2</sup>
Abrasion resistance (glazed Ceramic)	EN ISO 10545-07	IV
Thermal shock resistance	EN ISO 10545-09	It stands the test
Cracking resistance	EN ISO 10545-11	It stands the test
Frost resistance	EN ISO 10545-12	It stands the test

## CHEMICAL PROPERTIES

Resistance to acids	EN ISO 10545-13	GLA
Resistance to alcalis	EN ISO 10545-13	GLA
Resistance to cleaning products	EN ISO 10545-13	GA
Resistance to chemical products in swimming pool water	EN ISO 10545-13	GA
Stains resistance	EN ISO 10545-14	5

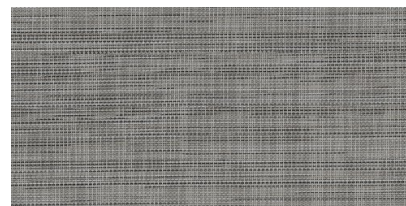
## ANTI-SLIP CHARACTERISTICS

Slip resistance (Rd)	UNE-ENV12633	Class 1
Slip resistance (R)	DIN 51130	R10
Slip resistance (DCOF)	ANSI A137,1	0.42



# HABITAT GREY RECT 30X60

REFERENCE	SIZE (cm)	THICKNESS (mm)	GROUP
<b>A037155</b>	30X60	10,00	



## DIMENSIONS AND SURFACE PROPERTIES

Size, thickness, side straightness, flatness, orthogonality UNE-EN 14411 It accomplished all requirements

## PHYSICAL PROPERTIES

Water absorption capacity	EN ISO 10545-03	< 0,5%
Flexion resistance	EN ISO 10545-04	=> 45 N/mm <sup>2</sup>
Abrasion resistance (glazed Ceramic)	EN ISO 10545-07	IV
Thermal shock resistance	EN ISO 10545-09	It stands the test
Cracking resistance	EN ISO 10545-11	It stands the test
Frost resistance	EN ISO 10545-12	It stands the test

## CHEMICAL PROPERTIES

Resistance to acids	EN ISO 10545-13	GLA
Resistance to alcalis	EN ISO 10545-13	GLA
Resistance to cleaning products	EN ISO 10545-13	GA
Resistance to chemical products in swimming pool water	EN ISO 10545-13	GA
Stains resistance	EN ISO 10545-14	5

## ANTI-SLIP CHARACTERISTICS

Slip resistance (Rd)	UNE-ENV12633	Class 1
Slip resistance (R)	DIN 51130	R10
Slip resistance (DCOF)	ANSI A137,1	0.42

# HABITAT CAPPUCCINO RECT 30X60

REFERENCE	SIZE (cm)	THICKNESS (mm)	GROUP
<b>A037154</b>	30X60	10,00	



## DIMENSIONS AND SURFACE PROPERTIES

Size, thickness, side straightness, flatness, orthogonality UNE-EN 14411 It accomplished all requirements

## PHYSICAL PROPERTIES

Water absorption capacity	EN ISO 10545-03	< 0,5%
Flexion resistance	EN ISO 10545-04	=> 45 N/mm <sup>2</sup>
Abrasion resistance (glazed Ceramic)	EN ISO 10545-07	IV
Thermal shock resistance	EN ISO 10545-09	It stands the test
Cracking resistance	EN ISO 10545-11	It stands the test
Frost resistance	EN ISO 10545-12	It stands the test

## CHEMICAL PROPERTIES

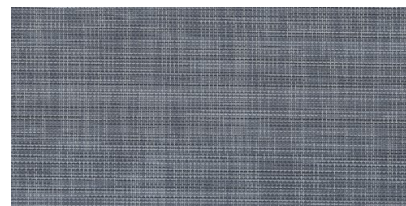
Resistance to acids	EN ISO 10545-13	GLA
Resistance to alcalis	EN ISO 10545-13	GLA
Resistance to cleaning products	EN ISO 10545-13	GA
Resistance to chemical products in swimming pool water	EN ISO 10545-13	GA
Stains resistance	EN ISO 10545-14	5

## ANTI-SLIP CHARACTERISTICS

Slip resistance (Rd)	UNE-ENV12633	Class 1
Slip resistance (R)	DIN 51130	R10
Slip resistance (DCOF)	ANSI A137,1	0.42

# HABITAT BLUE RECT 30X60

REFERENCE	SIZE (cm)	THICKNESS (mm)	GROUP
<b>A037152</b>	30X60	10,00	



## DIMENSIONS AND SURFACE PROPERTIES

Size, thickness, side straightness, flatness, orthogonality	UNE-EN 14411	It accomplished all requirements
---	--------------	----------------------------------

## PHYSICAL PROPERTIES

Water absorption capacity	EN ISO 10545-03	< 0,5%
Flexion resistance	EN ISO 10545-04	=> 45 N/mm <sup>2</sup>
Abrasion resistance (glazed Ceramic)	EN ISO 10545-07	IV
Thermal shock resistance	EN ISO 10545-09	It stands the test
Cracking resistance	EN ISO 10545-11	It stands the test
Frost resistance	EN ISO 10545-12	It stands the test

## CHEMICAL PROPERTIES

Resistance to acids	EN ISO 10545-13	GLA
Resistance to alcalis	EN ISO 10545-13	GLA
Resistance to cleaning products	EN ISO 10545-13	GA
Resistance to chemical products in swimming pool water	EN ISO 10545-13	GA
Stains resistance	EN ISO 10545-14	5

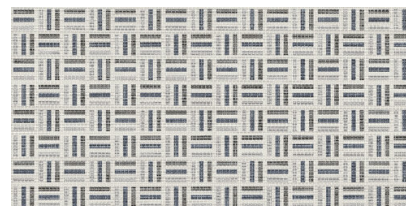
## ANTI-SLIP CHARACTERISTICS

Slip resistance (Rd)	UNE-ENV12633	Class 1
Slip resistance (R)	DIN 51130	R10
Slip resistance (DCOF)	ANSI A137,1	0.42



# POCKET BLUE RECT 30X60

REFERENCE	SIZE (cm)	THICKNESS (mm)	GROUP
<b>A037156</b>	30X60	0,00	



## DIMENSIONS AND SURFACE PROPERTIES

Size, thickness, side straightness, flatness, orthogonality UNE-EN 14411 It accomplished all requirements

## PHYSICAL PROPERTIES

Water absorption capacity	EN ISO 10545-03	< 0,5%
Flexion resistance	EN ISO 10545-04	=> 45 N/mm <sup>2</sup>
Abrasion resistance (glazed Ceramic)	EN ISO 10545-07	IV
Thermal shock resistance	EN ISO 10545-09	It stands the test
Cracking resistance	EN ISO 10545-11	It stands the test
Frost resistance	EN ISO 10545-12	It stands the test

## CHEMICAL PROPERTIES

Resistance to acids	EN ISO 10545-13	GLA
Resistance to alcalis	EN ISO 10545-13	GLA
Resistance to cleaning products	EN ISO 10545-13	GA
Resistance to chemical products in swimming pool water	EN ISO 10545-13	GA
Stains resistance	EN ISO 10545-14	5

## ANTI-SLIP CHARACTERISTICS

Slip resistance (Rd)	UNE-ENV12633	Class 1
Slip resistance (R)	DIN 51130	R10
Slip resistance (DCOF)	ANSI A137,1	0.42

